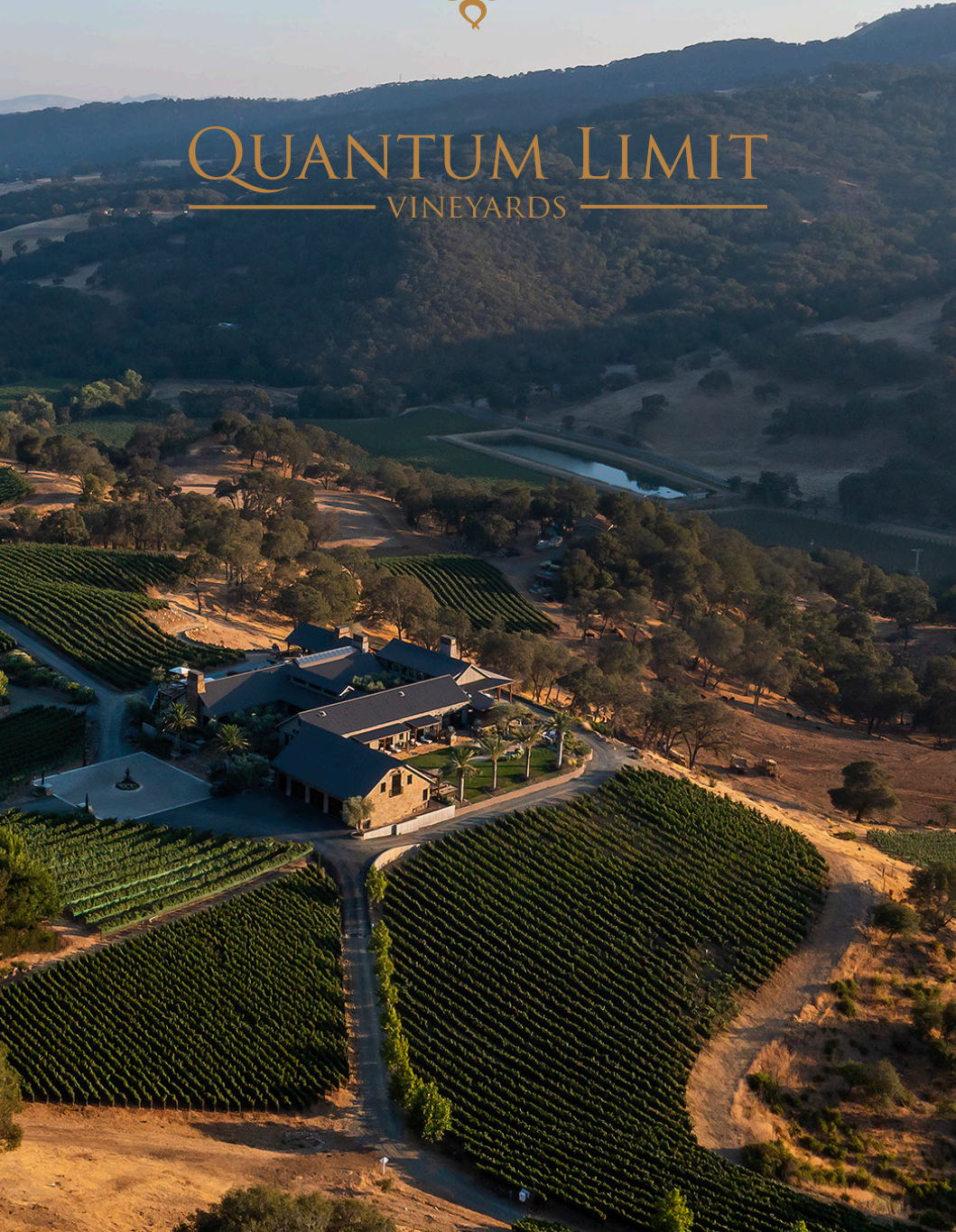




# QUANTUM LIMIT

VINEYARDS





*James Hart Dyke*

*The Howell Cordillera from The Quantum Limit*

A UNIQUE AND  
SOUGHT AFTER  
LOCATION IN  
NAPA VALLEY

## QUANTUM LIMIT

Quantum Limit is a 69-acre sprawling mountain-side ranch located in the Napa Valley AVA. Situated on a spectacular bench of the Howell Cordillera, on the southern end of the Howell Mountains in the southeastern corner of Napa Valley. The property is directly east of Coombsville and south of Atlas Peak sub-appellations. At the southwestern base of Quantum Limit lies Wooden Valley, and on the northeast side is Gordon Valley, two bucolic agricultural jewels of the Napa Valley AVA.

Most of the grapes farmed in this area are sold to prestigious Napa wine producers who are privy to its secrets, including Caymus, Favia, Stags Leap, Mondavi and Antinori.

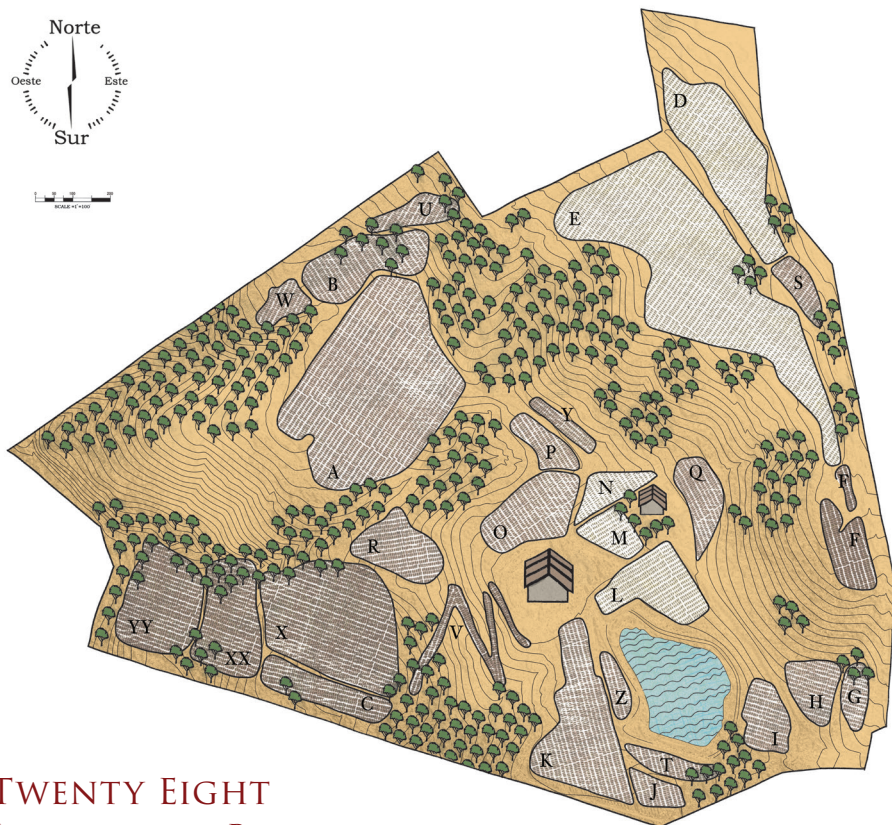
## METICULOUS OLD WORLD HAND FARMING

Temperature mapping shows that the area has a near ideal climate for Cabernet Sauvignon. The vineyard's soil imparts all of the complex flavors of the volcanic sandstone and shale of the Howell Mountain earth, but with more controlled sun for ripeness. The close proximity to the cooling fog of San Pablo Bay at night helps to maintain appropriate acidity in the wine.

Quantum Limit Vineyards embraces classical hand-farming, nighttime hand-harvesting and optical sorting, along with compulsive micro-vineyard management including constant petiole testing, drone mapping, relentless soil analysis and adjustments, vigilant irrigation control, use of morning and afternoon shade cloth, vineyard misters, bird netting, organic admixing to every vine, cover crop symbiosis, and constant canopy management in its quest to produce its Napa Valley Grand Cru.

The outcome is wines that are deeply sophisticated, strikingly complex, beautifully finessed, with substantial structure and elegance.





## TWENTY EIGHT INDIVIDUAL BLOCKS

The ranch encompasses a 25-acre planted vineyard that is bifurcated into twenty eight separate and unique mountainside vineyard blocks that are straddling a southern Howell Mountain Range bench, largely west-southwest facing across wildlife corridors and harrowing steep hillsides with an average incline of 25% (some up to 40%), that are intermixed with blue line, riparian, and ephemeral streams. The vineyard is planted to both Cabernet Sauvignon and Cabernet Franc varietals that straddle the volcanic hillside up to 900 feet in elevation.

The 28 distinct mountainside vineyard blocks encompass differing elevation, incline, soil composition, microclimates, solar aspects, grape clones, root stock and planting density, providing a range of single vineyard designated wines of remarkable distinction, complexity, elegance and quality. This allows us to individuate the vineyards across the twenty-eight blocks, increasing complexity and eliminating any possibility of vineyard monotony.

## Twenty Eight Blocks Quantum Limit Vineyards

Block	Name	Acres	Spacing	Varietal	Clone / Rootstock	Vines
A	<i>Proximity</i>	4.3	4.5 x 6.5	<i>Cab Sauv.</i>	7/110 <sup>R</sup> 15/110 <sup>R</sup>	5669 144
B	<i>St. Martin de Porres</i>	0.45	4.5 x 6.5	<i>Cab Sauv.</i>	7/110 <sup>R</sup> 15/110 <sup>R</sup>	266 262
C	<i>Superimposition</i>	0.5	4.5 x 6.5	<i>Cab Sauv.</i>	15/110 <sup>R</sup> 15/110 <sup>R</sup>	298 193
D	<i>Coyote Bluff</i>	1.64	4.5 x 6.5	<i>Cab Sauv.</i>	7/110 <sup>R</sup> 15/110 <sup>R</sup>	2625
E	<i>Quilt</i>	4.34	4.5 x 6.5	<i>Cab Sauv.</i>	7/110 <sup>R</sup> 5/110 <sup>R</sup>	6198 131
F	<i>Schrodinger's Paradox</i>	0.61	4.5 x 6.5	<i>Cab Sauv.</i>	7/110 <sup>R</sup>	1070
G	<i>Dark Matter G</i>	0.13	4.5 x 6.5	<i>Cab Sauv.</i>	7/110 <sup>R</sup> 15/110 <sup>R</sup>	155 77
H	<i>Dark Matter H</i>	0.58	4.5 x 6.5	<i>Cab Sauv.</i>	7/110 <sup>R</sup>	873
I	<i>Resonant</i>	0.44	4 x 3	<i>Cab Sauv.</i>	7/110 <sup>R</sup>	1610
J	<i>Maremma Watch J</i>	0.29	4.5 x 8	<i>Cab Sauv.</i>	7/101-14 7/1103p 140R	355 359
K	<i>Maremma Watch K</i>	1.63	3 x 3	<i>Cab Sauv.</i>	7/110 <sup>R</sup> 7/1103p 140R	1481 1869
L	<i>Martha's Fire</i>	0.82	3 x 3	<i>Cab Sauv.</i>	7/110 <sup>R</sup> 7/1103p 140R	735 914
M	<i>Chuck's Joie de Vivre</i>	0.29	3 x 3	<i>Cab Sauv.</i>	7/110 <sup>R</sup> 7/1103p 140R	273 337
N	<i>Coherent Evolution</i>	0.35	3 x 4	<i>Cab Sauv.</i>	7/101-14	1277
O	<i>Parallel Worlds</i>	1.16	4.5 x 6.5	<i>Cab Sauv.</i>	7/110 <sup>R</sup>	1829
P	<i>Entanglement</i>	0.49	4.5 x 6.5	<i>Cab Sauv.</i>	7/110 <sup>R</sup>	738
Q	<i>Heisenberg's Uncertainty</i>	0.5	5 x 5	<i>Cab Sauv.</i>	7/110 <sup>R</sup>	984
R	<i>Diamond Back</i>	0.59	4.5 x 6.5	<i>Cab Sauv.</i>	7/110 <sup>R</sup>	877
S	<i>Coyote Ridge</i>	0.20	4.5 x 6.5	<i>Cab Sauv.</i>	7/110 <sup>R</sup>	301
T	<i>Conditional Logic</i>	0.10	4 x 3	<i>Cab Sauv.</i>	7/110 <sup>R</sup> 15/110 <sup>R</sup>	688 408
U	<i>Wayfinder</i>	0.27	4.5 x 6.5	<i>Cab Sauv.</i>	7/110 <sup>R</sup>	513
V	<i>Teleportation</i>	0.7	4 x 3	<i>Cab Sauv.</i>	15/110 <sup>R</sup>	363 73
W	<i>Non-locality</i>	0.32	4.5 x 6	<i>Cab Sauv.</i>	7/110 <sup>R</sup>	465
X	<i>The Conjecture</i>	3.1	4.5 x 6.5	<i>Cab Sauv.</i> <i>Cab Franc</i>	30/110 <sup>R</sup> 214.1 810 / 110 <sup>R</sup>	1585 649
Y	<i>Disordered State</i>	0.2	4.5 x 5	<i>Cab Sauv.</i>	7/110 <sup>R</sup>	235
Z	<i>Objective Reality</i>	0.15	6 x 4	<i>Cab Sauv.</i>	15/110 <sup>R</sup>	149
XX	<i>Inclinato</i>	0.50	4.5 x 3	<i>Cab Sauv.</i> <i>Cab Franc</i>	7/110 <sup>R</sup>	1417 321
YY	<i>Conditional Probability</i> <i>Cab Franc</i>	0.75	6.5 x 4.5	<i>Cab Sauv.</i> <i>Cab Franc</i>	30/110 <sup>R</sup> 810 214.1 810 / 110 <sup>R</sup>	1002 224
		25.4			<b>Total</b>	<b>40,274</b>



## RENOWN NAPA WINEMAKERS

We make only a limited amount of collectors wine, but what we make is crafted from the best hands and creative minds in the business. A key goal set by the proprietors is to harness the incredible Napa power and intensity, but make Grand Cru wine of age worthiness and sophistication. Philippe Melka has studied the terroir of Quantum Limit and is making wines reflecting this ‘soil driven focus’, allowing the vineyard’s unique terroir and climate to articulate its special message. We ferment in stainless steel tanks and/or oak puncheons, generally with minimal extraction to showcase the vineyard’s terroir, and age between 24-36 months in carefully chosen new French oak barrels. If we blend it’s usually always with our Napa Estate grown Cabernet Franc.



*Philippe Melka* is arguably the most famous French born winemaker of Napa, previously working with Château Haut-Brion, Château Petrus and several Moueix Domains in Bordeaux; as well as Dominus, 100 Acres and many other top houses in Napa Valley.



*Julien Fayard* was past winemaker/oenologue for Château Sainte Marguerite and has had both winemaking and vineyard management experience with Château Lafite Rothschild and Château Smith Haut Lafitte.



*Maayan Koshitzky* is a partner with Atelier Melka bringing significant experience and success at prominent Napa wineries such as Screaming Eagle and Dalla Valle to name only a few.



## AN ADVANCEMENT IN THE EVOLUTION OF THE NAPA CABERNET TERROIR

We produce single vineyard designated collectable wines of character, rarity (<500 cases/year total) and distinctiveness.

Although the specific block(s) showcased that particular year will have its own individual vintage characteristics, we have found the overall vineyard to consistently exhibit a backbone of deeply ripe and concentrated cabernet fruit with cherry and blackberry, black chocolate flavors with cassia, licorice, blackberry and other fruit aromas, including complex coffee, mocha and spice, leading to a long penetrating finish with excellent acidity.



### TWENTY EIGHT BLOCKS

A strict single estate vineyard designated wine encompassing the very best of one or two of the micro-terroir driven blocks of that particular vintage.



### QUANTUM LIMIT

A blend of a vintage specific tapestry of blocks across the vineyard.



QUANTUM LIMIT  
VINEYARDS

